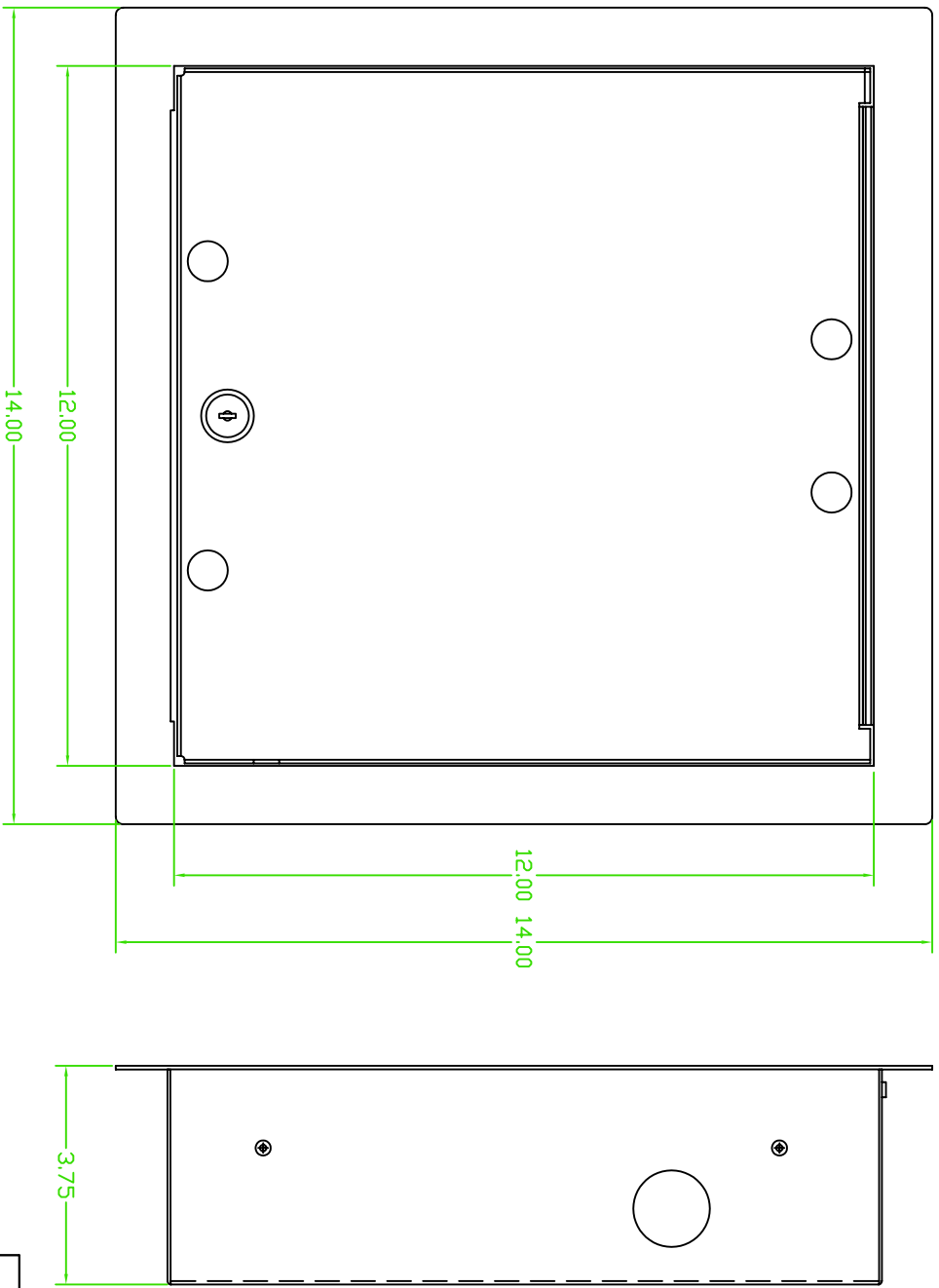


REVISIONS				
ZONE	REV	DESCRIPTION	DATE	APPROVED

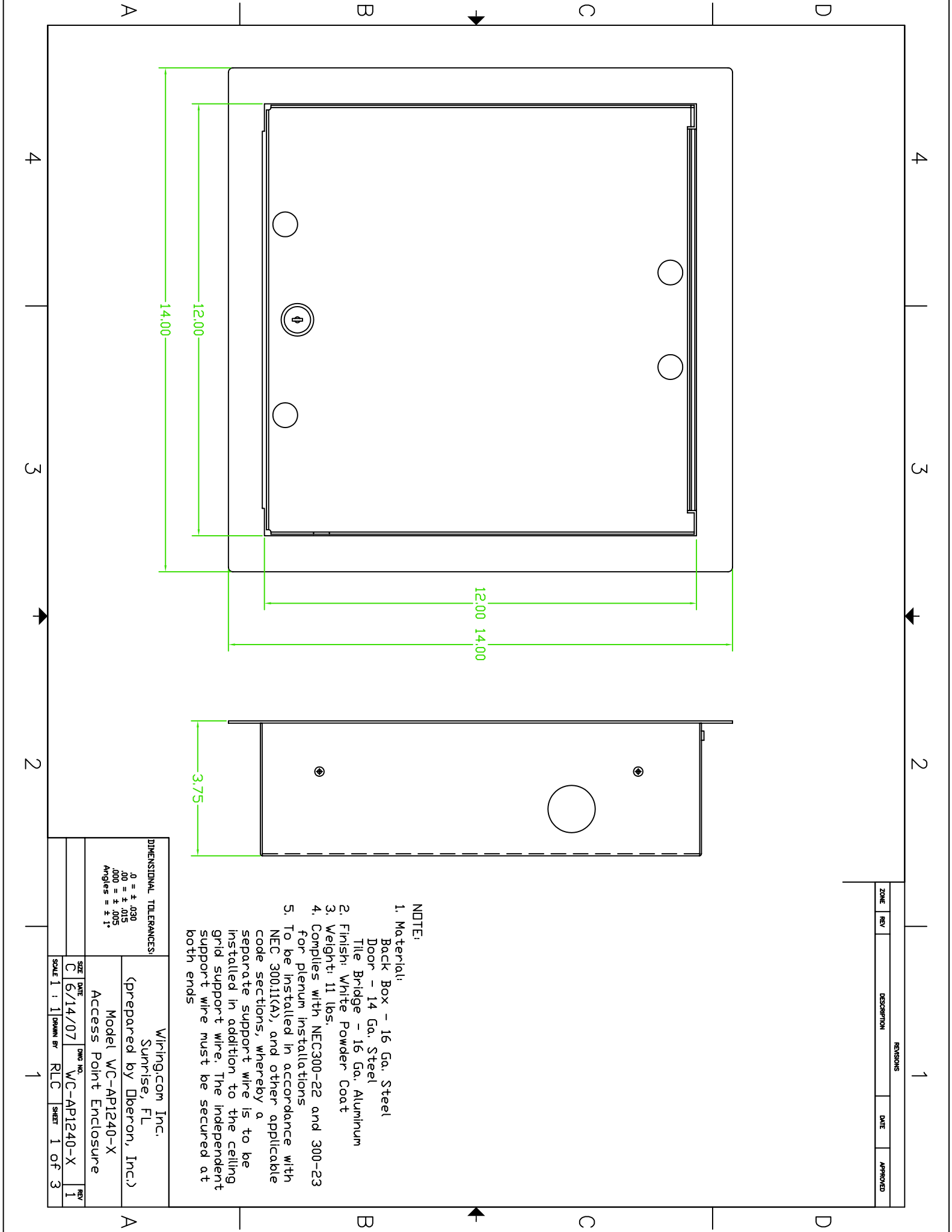


- NOTE:
1. Material:  
Back Box - 16 Ga. Steel  
Door - 14 Ga. Steel  
Tile Bridge - 16 Ga. Aluminum
  2. Finish: White Powder Coat
  3. Weight: 11 lbs.
  4. Complies with NEC300-22 and 300-23 for plenum installations
  5. To be installed in accordance with NEC 300.11(A), and other applicable code sections, whereby a separate support wire is to be installed in addition to the ceiling grid support wire. The independent support wire must be secured at both ends

Wiring.com Inc.  
Sunrise, FL  
(prepared by Oberon, Inc.)  
Model WC-AP1240-X  
Access Point Enclosure

DIMENSIONAL TOLERANCES:  
.0 = ± .030  
.00 = ± .015  
.000 = ± .005  
Angles = ± 1°

SIZE	DATE	DWG NO.	REV
C	6/14/07	WC-AP1240-X	1
SCALE	1 : 1	DRAWN BY	RLC
		SHEET	1 of 3



TOP VIEW SHOWING CEILING TILE BRIDGES

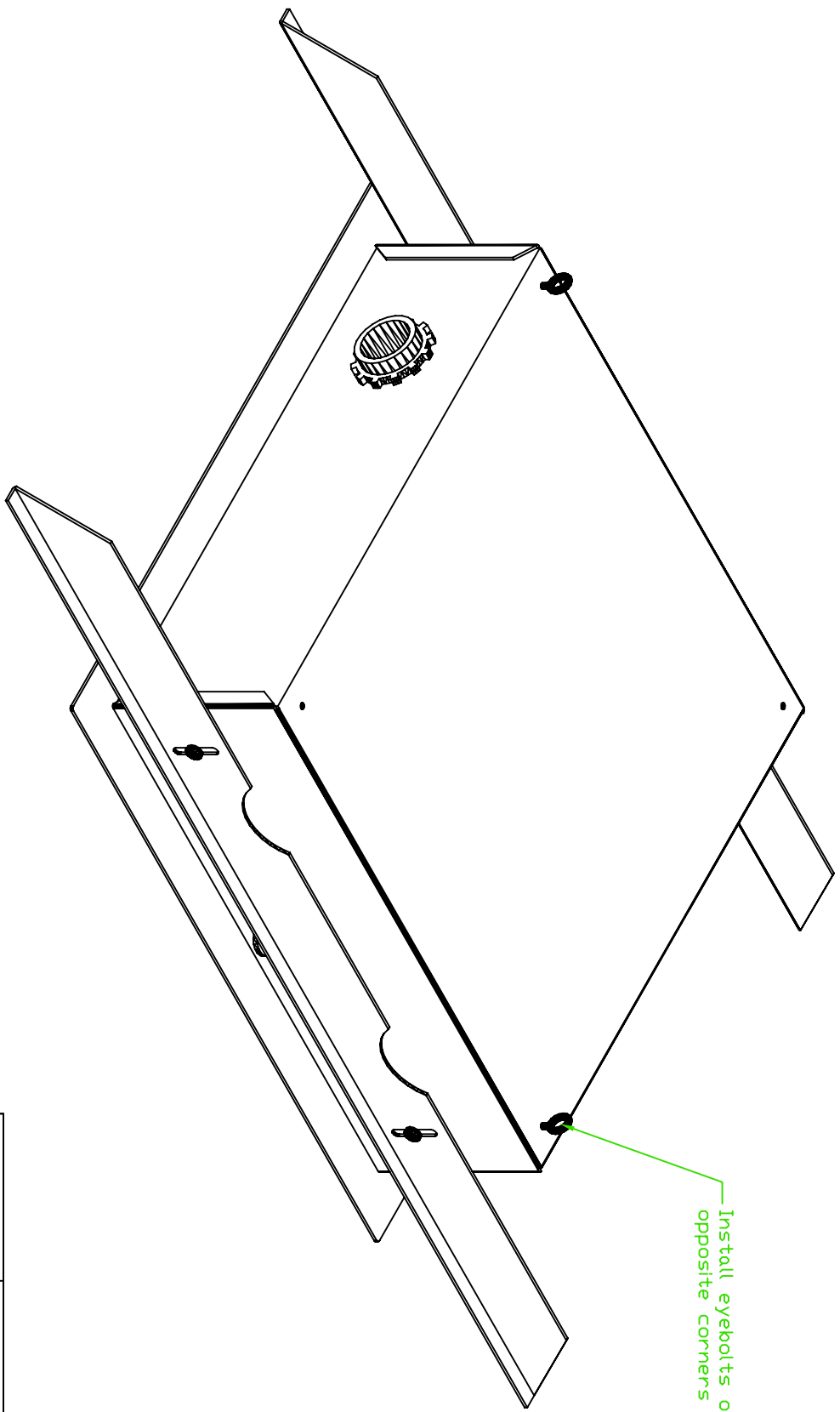
4

3

2

1

REVISIONS				
ZONE	REV	DESCRIPTION	DATE	APPROVED



DIMENSIONAL TOLERANCES:  
 .0 = ± .030  
 .00 = ± .015  
 .000 = ± .005  
 Angles = ± 1°

Wiring.com Inc.  
 Sunrise, FL  
 (prepared by Oberon, Inc.)  
 Model WC-AP1240-X  
 Access Point Enclosure

SIZE	DATE	DWG NO.	REV
C	6/14/07	WC-AP1240-X	1
SCALE	1 : 1	DRAWN BY	SHEET
		RLC	2 OF 3

A

B

C

D

A

B

C

D

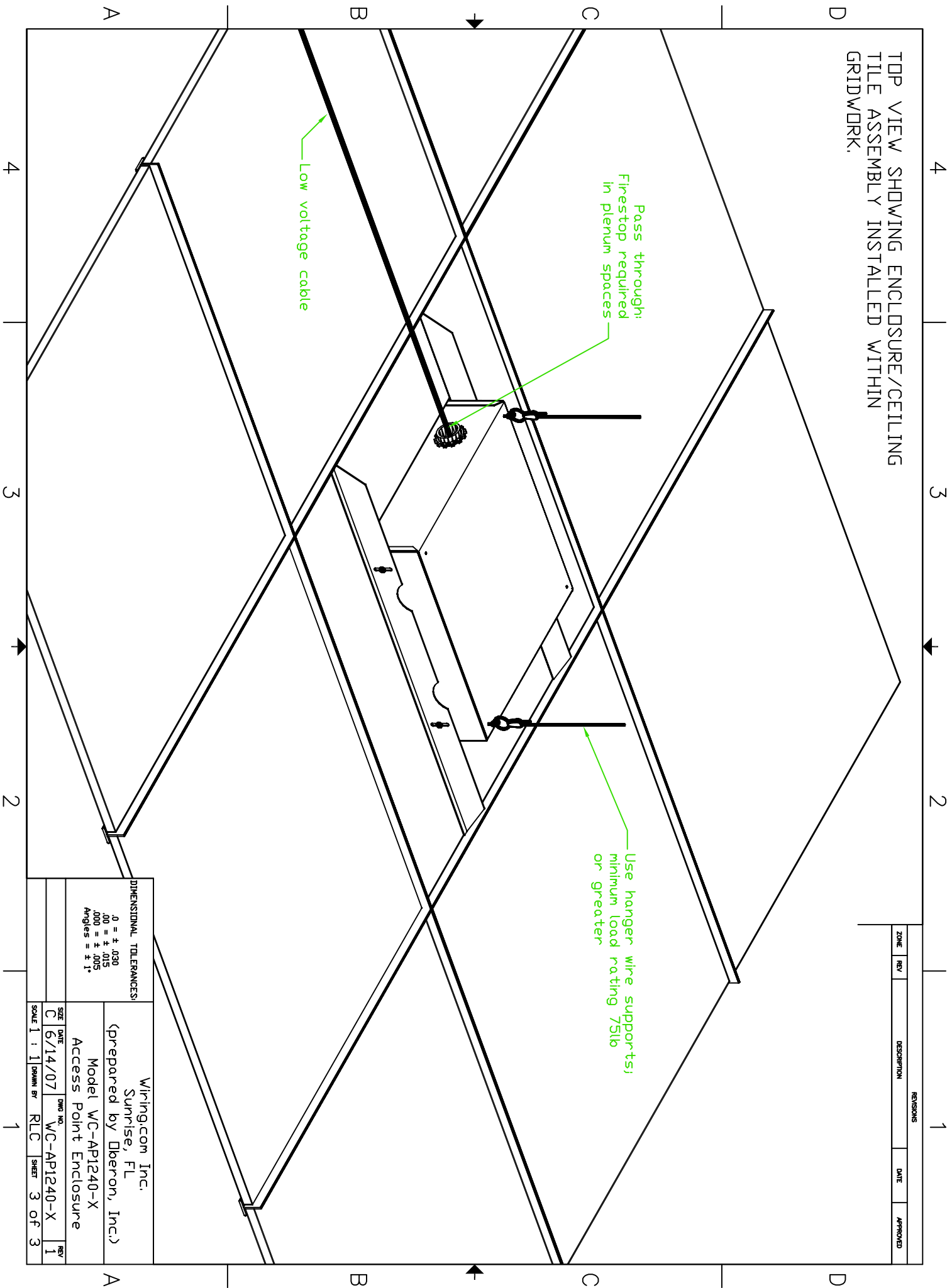
4

3

2

1

TOP VIEW SHOWING ENCLOSURE/CEILING  
TILE ASSEMBLY INSTALLED WITHIN  
GRIDWORK.



REVISIONS		DATE	APPROVED
ZONE	REV	DESCRIPTION	

DIMENSIONAL TOLERANCES:  
 .0 = ± .030  
 .00 = ± .015  
 .000 = ± .005  
 Angles = ± 1°

Wirtinger.com Inc.  
 Sunrise, FL  
 (prepared by Oberon, Inc.)  
 Model WC-AP1240-X  
 Access Point Enclosure

SIZE	DATE	DWG NO.	REV
C	6/14/07	WC-AP1240-X	1
SCALE	1 : 1	DRAWN BY	SHEET
		RLC	3 OF 3