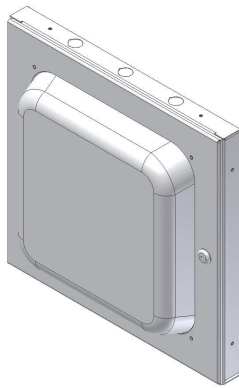
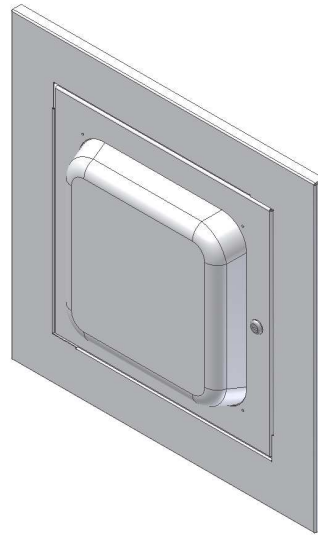


Oberon’s model 1030-00 “hard lid” or wall mount enclosure provides a secure, aesthetic, convenient mounting solution for wireless access points from most vendors. The enclosure has a low profile impact resistant ABS dome so that wireless access points with integrated or non-detachable antennas can be secured in otherwise unsecured spaces. The product is UL Listed and designed to satisfy National Electric Code (NEC) paragraphs 300-22 and 300-23 for installation in the air handling space. Locks are “keyed-alike” to simplify moves, adds, and changes. An optional suspended ceiling flange kit permits the model 1030-00 to be mounted in a standard 2’ x 2’ suspended ceiling system.



Model 1030-00



Model 1030-00 w/ Optional 2'x2' Suspended Ceiling Flange Kit

Specifications:

- Wireless access point enclosure designed to be surface mounted on “hard-lid” ceilings or walls.
- Suspended ceiling flange kit (part number 1030-FLANGE) is optional
- When mounted in the ceiling, enclosure must be supported by the building ceiling structural system, not tile gridwork.
- Designed to accommodate wireless access points with integrated or non-detachable antennas
- Designed to meet NEC300-22 and 300-23 for air handling space installations
- UL Listed (File #E249360), OSHPD approved (OPA # 1638)
- Fully hinged locking door, keyed alike
- Construction: 16 gauge, powder coated steel, and impact resistant, UL listed, RF transparent, ABS dome
- Size: 17" x 17" x 3 ½" (total depth), the dome is 12" x 12" x 2"
- Weight: 6 lbs (not including access point)

Model 1030-00 Includes:

- (1) Clamp connector
- (2) Keys for lock
- (4) # 6-32 x 3/16 Screws
- (4) # 8-32 x 3/16 Screws
- Mounting Instructions