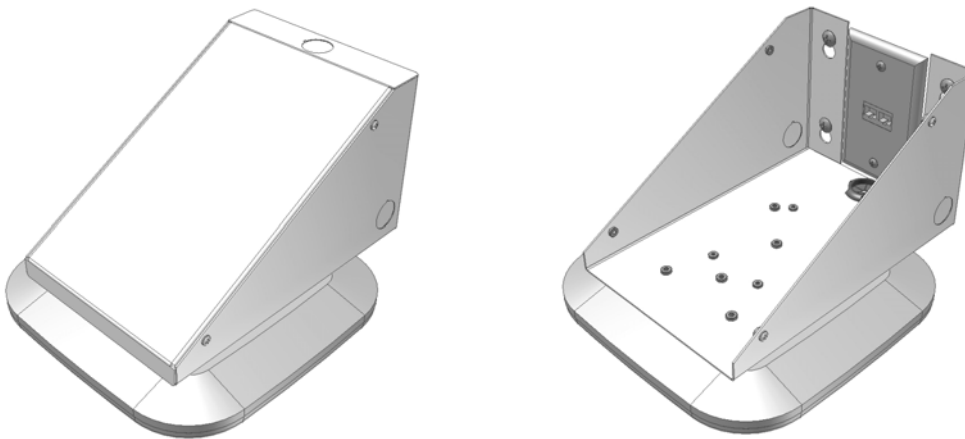


## Model 1029-00

## Wall Mount Enclosures

Many wireless access point manufacturers recommend that the access point be mounted in a “horizontal” orientation to achieve best wireless coverage. Horizontal mounting may be difficult in hard lid and other environments where the access point is mounted on the wall. Oberon’s Model 1029-00 wireless LAN access point wall mount bracket is designed to mount and secure access points from most manufacturers in areas where wall mounting is required. This aesthetic, white powder coated steel mounting bracket is ideal for mounting the access point in the preferred “horizontal” orientation. Conduit, raceways, and cable can be securely terminated inside the enclosure to provide for a clean appearance. The access point can be locked in place using the manufacturer’s bracket lock feature.



1) Model 1029-00 shown with Cisco 1040 access point (not included) 2) 1029-00 with cover off & wall plate (not included)

### Specifications:

- Designed for mounting on indoor walls, where secure horizontal mounting is required
- Designed for Cisco 1040/1140/1260/3500/3600 series and Aruba Networks AP105/121/125/135 access points. Other access points can be mounted using optional universal mounting plates. Ask your Oberon representative for details.
- Knockouts on two sides and top for 1/2” trade size conduit clamps
- 2 part Construction: textured white powder coated 18 gauge steel right angle bracket and cover
- Size: 9" x 6" wide x 5" tall
- Weight: 3.5 lbs with out equipment

### Model 1029-00 Includes:

- (4) #8 screws for Cisco bracket
- (4) #6 screws for Aruba Networks bracket
- (4) screws for the cover
- Mounting Instructions