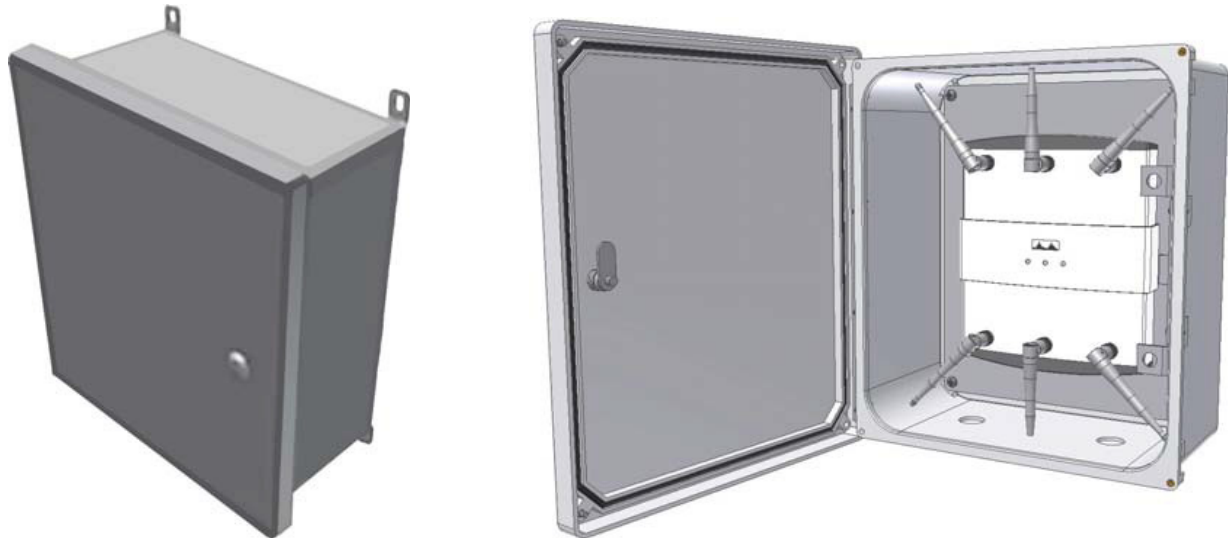


## Model 1025-00

## Outdoor NEMA Wall Mount Enclosures

The Model 1025-00 is a wireless LAN access point enclosure is a 30% fiberglass reinforced polyester NEMA-4 construction. This indoor/outdoor enclosure has a locking door, and is designed to accommodate access points with detachable or non-detachable antennas from most manufacturers. Designed to enable a NEMA 4 installation when properly sealed antennas and cable feeds are installed, this construction is virtually transparent to radio frequency signals.



Model 1025-00 shown with Cisco 1252 and six dipole antennas (not included) NOTE: External antennas require additional holes to be drilled into enclosure

### Specifications:

- Designed for mounting on indoor hard walls, where secure mounting is required
- Internal mounting plate accommodates access points from most manufacturers
- (2)  $\frac{3}{4}$ " trade size cable feed-through openings in the bottom
- UL listed and tested to UL508-4X requirements NEMA 4X enclosure
- Typical temperature rise is  $<10^{\circ}\text{C}$  with powered access point; to avoid excessive heat build up in the enclosure, avoid direct exposure to sunlight
- Construction: 30% fiberglass reinforced polyester, grey, paintable, virtually transparent to RF signals
- Fully hinged locking door, weather-proof lock; door has a neoprene perimeter gasket
- Size: 13" x 15" x 6.5" deep
- Weight: 10.5 lbs

### Model 1025-00 Includes:

- (1)  $\frac{3}{4}$ " Trade size conduit clamp; (1) hole plug
- (4) Stainless steel mounting feet for wall mount and 2 keys for weather-proof lock
- (1) Universal mounting plate
- Mounting Instructions