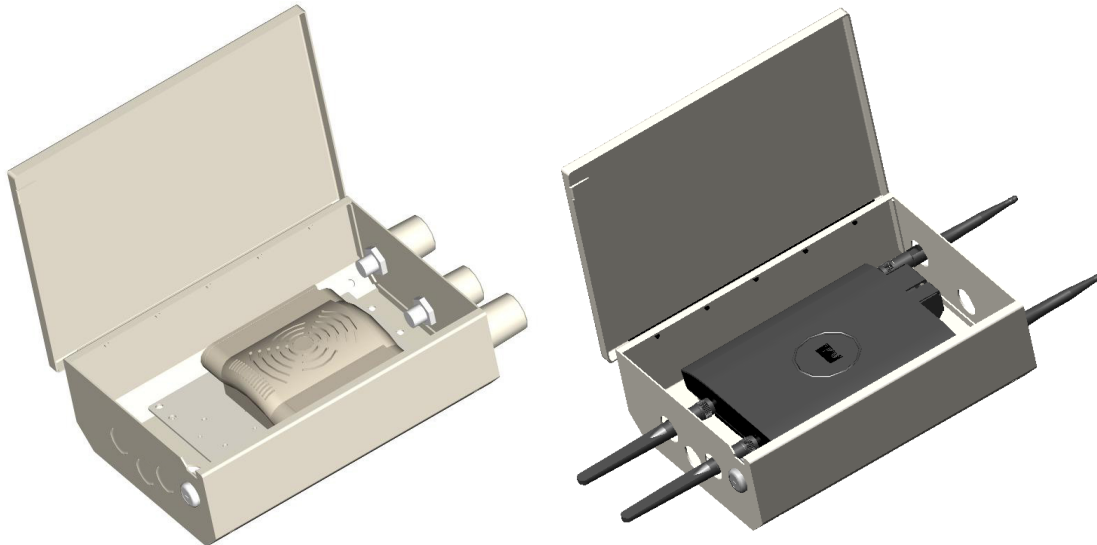


Model 1023-00

Wall Mount Enclosures

The Model 1023-00 wireless LAN access point enclosure is a locking, wall-mounted enclosure, designed to accommodate access points from most manufacturers. This aesthetic, white powder coated steel enclosure has seven knockouts for antennas and cables.



1) Model 1023-00 shown with (3) optional Oberon 34-ZDUAL Antennas 2) Shown with Cisco 1242 standard dipoles projecting through knockouts

Specifications:

- Designed for mounting on indoor hard walls, where secure mounting is required
- Internal mounting plate accommodates access points from most vendors
- Cisco 1242 dipole antennas protrude through standard knockouts
- Antennas may be mounted externally using optional bulkhead connectors (Oberon P/N 35-BULKHD-KIT) or Oberon 34-ZDUAL antennas
- Beveled corners permit easy installation in the corner of the room
- Construction: Textured white powder-coated steel, 18 ga. backbox, 16 ga. door
- Fully hinged locking door, keyed alike
- Size: 7 ¾" x 11" x 3 ½", 3" useful depth with universal mounting plate in place
- Weight: < 6lbs

Model 1023-00 Includes:

- Mounting plate for many manufacturers access points, mounting screws & hardware
- (3) Knockouts on both top and bottom permit mounting of up to (6) external antennas
- Knockout for ¾" diameter conduit connector (included)
- Mounting instructions