

34-ZMIMO6X1 DUAL BAND 6-PORT WI-FI ANTENNA

ANTENNA

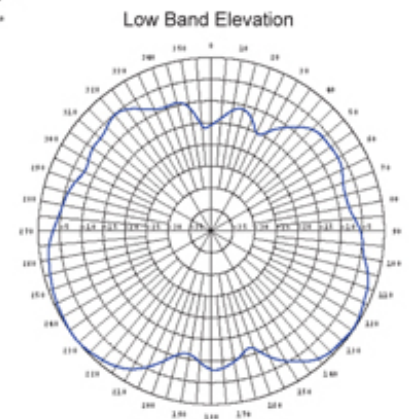
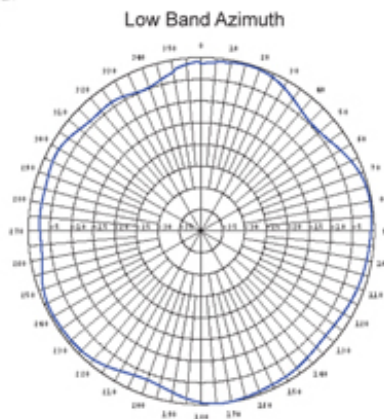
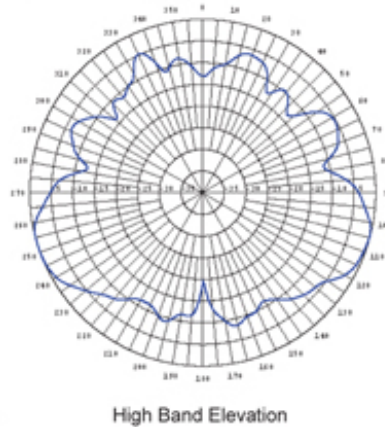
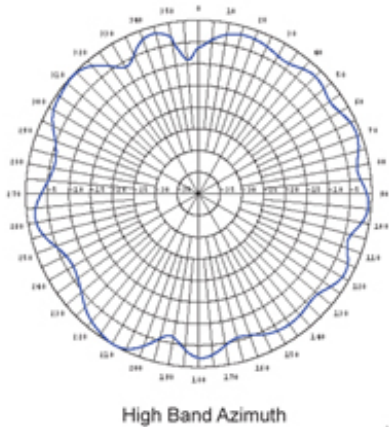


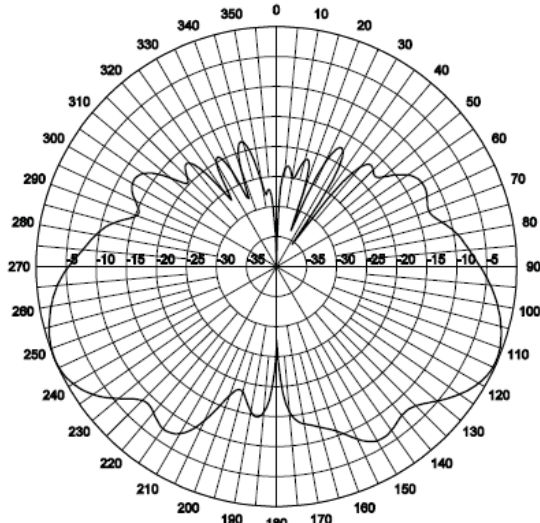
This very aesthetic indoor antenna provides for simple IEEE 802.11n MIMO upgrades for access points with 6 connectors. The antenna pattern is designed for ceiling mounted installations. The six plenum rated cables exit from two stud mounts in the antenna, requiring specification of, or replacement, of the door in Oberon's model 1052, 1072, and other ceiling mounted enclosures. (The upgrade door for the 1052 is the 38-ADPDOORZMIMO6X1). The antenna's cover is a textured UL94 V-0 plastic which is color matched to the enclosure.



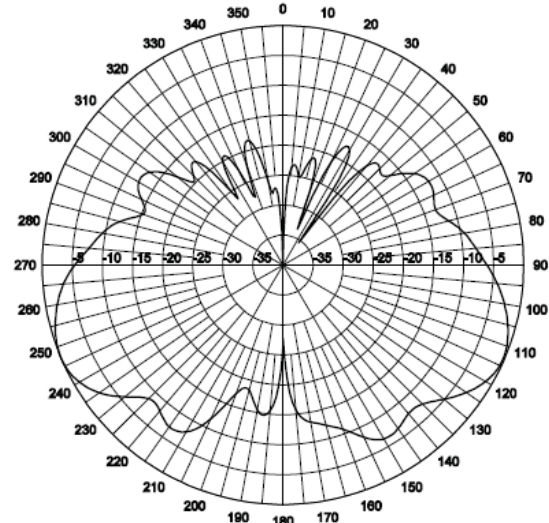
Model #34-ZMIMO6X1 Specifications

MODEL 34-ZMIMO3X1	CONNECTOR (6) RPSMA (6) RPTNC	FREQ RANGE 2400-2500 MHz 4900-5900 MHz	GAIN 2.5 DBi 3 dBi	VSWR <2:1 <2:1
GROUND PLANE Ground Plane Independent	SIZE 9.1" X 6.6" X 1.6"	PIG TAIL (6) 3' RG58/U CL2P	TEMP RANGE Indoor Office Environment	WEIGHT 1.5 lbs.

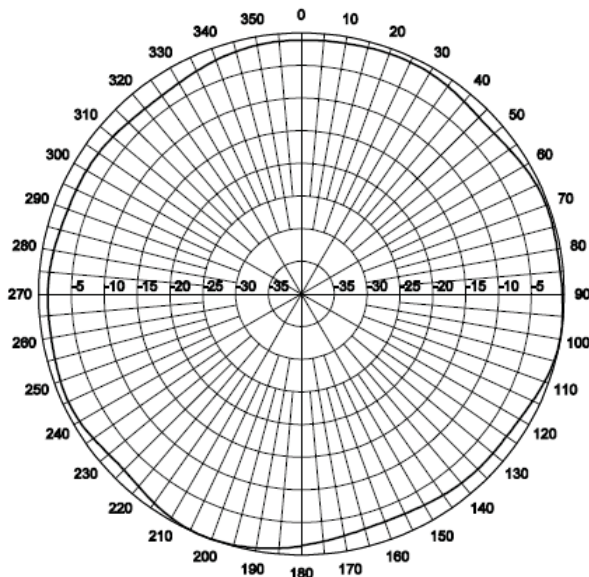




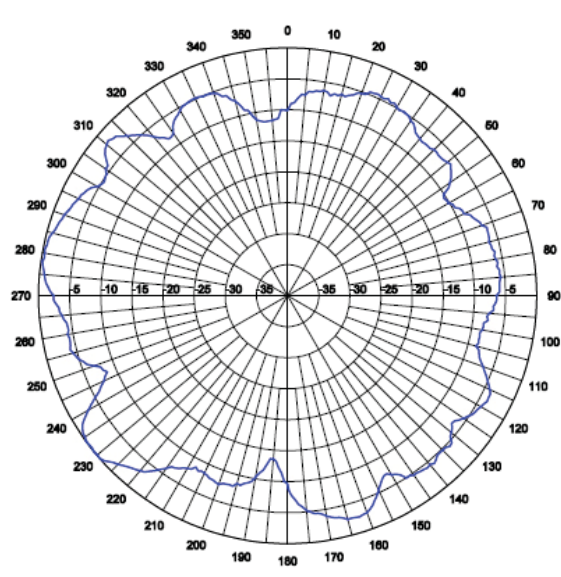
Elevation (E-Plane) Pattern in 2.4 GHz band
with antenna mounted on the 1052-SCCO enclosure,
as if enclosure is on the horizontal axis, 180 degrees is
in the workspace, and 0 degrees is above the ceiling



Elevation (E-Plane) Pattern in 5 GHz band
with antenna mounted on the 1052-SCCO enclosure,
as if enclosure is on the horizontal axis, 180 degrees is
in the workspace, and 0 degrees is above the ceiling



Horizontal (H-Plane) Pattern in 2.4 GHz band
with antenna mounted on 1052-SCCO enclosure



Horizontal (H-Plane) Pattern in 5 GHz band
with antenna mounted on 1052-SCCO enclosure