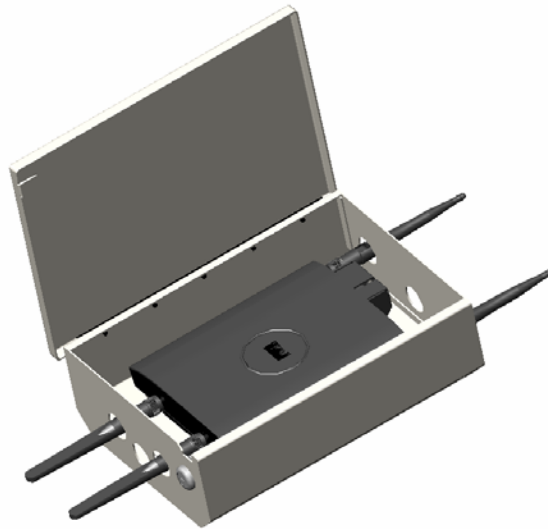


“Secure Mounting Solutions”

Model 1023-00

The model 1023-00 Wireless LAN Access Point Enclosure permits the AP to be secured in an aesthetic, locking, wall mounted steel box. Antenna ports provide a convenient way to provide effective RF coverage with many manufacturers' APs.



### Specifications:

- Designed for surface mounting on indoor hard walls, where secure mounting is required
- Beveled corners permit easy installation in the corner of the room
- Construction: 18 gauge steel
- Size: 7 ¾" x 11" x 3 ½", 3" useful depth with universal mounting plate in place
- Weight: < 6lbs

### Model 1023-00 Includes:

- Mounting Plate for many manufacturers access points, Mounting Screws & Hardware
- Mounting Instructions
- Knockouts on top and bottom of enclosure permit mounting of up to 4 external antennas
- Knockout for ¾" diameter cable clamp connector (included)