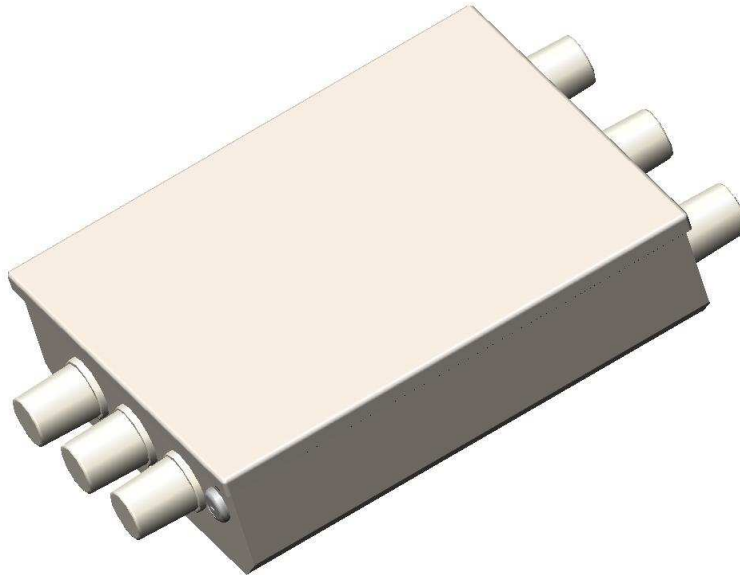


The model 1022-00 wireless LAN access point enclosure is a locking, wall-mounted enclosure, designed to accommodate access points from most manufacturers. This aesthetic, white powder coated steel enclosure has seven knockouts for antennas and cables. The Model 1022-00 is large enough to accommodate the Cisco 1250 series, and other 802.11n, wireless access points with six antennas.



Model 1022-00 shown with (6) optional Oberon 34-ZDUAL Antennas

### Specifications:

- Designed for mounting on indoor hard walls, where secure mounting is required
- Internal mounting plate accommodates access points from most manufacturers
- Antennas may be mounted externally using optional bulkhead connectors (Oberon P/N 35-BULKHD-KIT) or Oberon 34-ZDUAL antennas
- Beveled corners permit easy installation in the corner of the room
- Construction: 16 gauge door, 18 gauge back-box, textured white powder coated steel
- Fully hinged locking door, keyed alike
- Size: 11" x 12.5" x 4.25", 3.75" useful depth with universal mounting plate in place
- Weight: < 7lbs

### Model 1022-00 includes:

- Mounting plate for many manufacturers access points, mounting screws and hardware
- (3) Knockouts on both top and bottom permit mounting of up to (6) external antennas
- Knockout for  $\frac{3}{4}$ " diameter cable clamp connector (included)
- Mounting instructions